

ELIZABETH EGLOFF'S

THE SWAN

Lighting Design:
Cathy Bowren (540.449.6939)

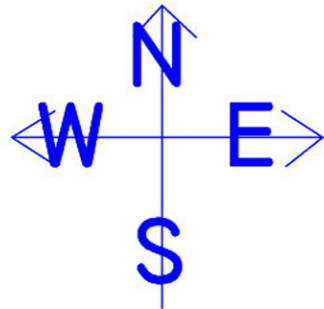
Directed by
Gregory Justice

Light Plot (As Lit)

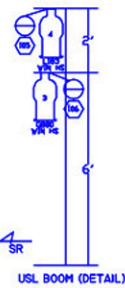
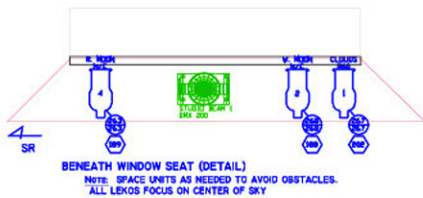
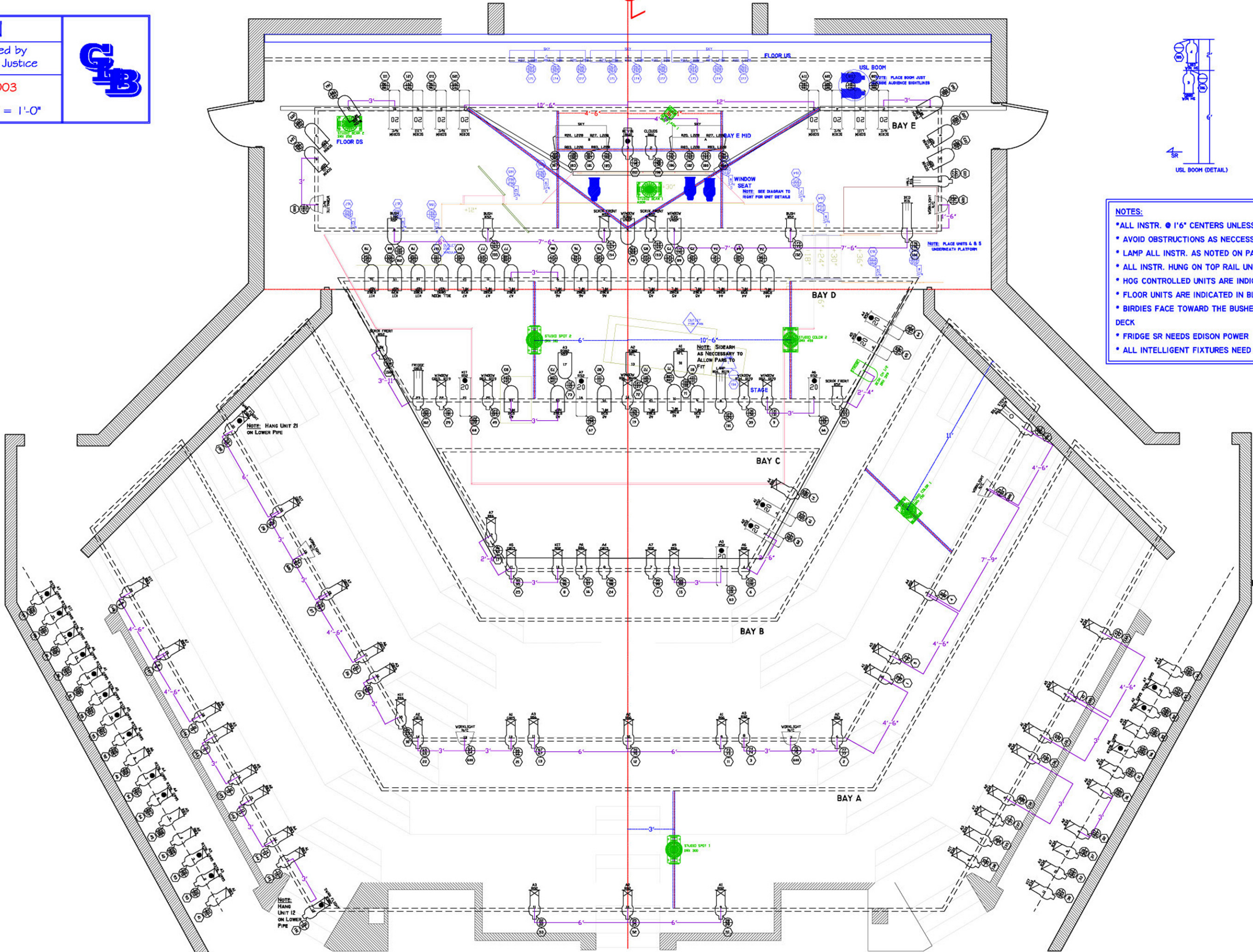
10-2-2003

Virginia Tech Studio Theatre

Scale: 1/4" = 1'-0"



BALCONY RAIL H.L.



- NOTES:
- ALL INSTR. • 1'6" CENTERS UNLESS OTHERWISE NOTED
 - AVOID OBSTRUCTIONS AS NECESSARY
 - LAMP ALL INSTR. AS NOTED ON PAPERWORK
 - ALL INSTR. HUNG ON TOP RAIL UNLESS OTHERWISE NOTED
 - HOG CONTROLLED UNITS ARE INDICATED IN GREEN
 - FLOOR UNITS ARE INDICATED IN BLUE
 - BIRDIES FACE TOWARD THE BUSHES, LAG BOLT INTO STAGE DECK
 - FRIDGE SR NEEDS EDISON POWER
 - ALL INTELLIGENT FIXTURES NEED EDISON POWER

INSTRUMENT KEY:

20" ALTMAN ICL

6 x 9 ALTMAN 360 Q

FOCUS COLOR

INST. TYPE

• PATTERN

• VINTAGE

• INST. NO.

• CIRCUIT

• DIMMER

• CHANNEL

• DIMMABLE PRACTICAL

• NON-DIMMABLE PRACTICAL

1K VNSP PAR

6 x 12 ALTMAN 360 Q

1K NSP PAR

6 x 16 ALTMAN 360 Q

1K NFL PAR

6 x 22 ALTMAN 360 Q

14" STRAND CENTURY SCOP

3 CKT ALTMAN MINI STRIP

DIVERSITRONICS STROBE CANNON

4 CKT ALTMAN SKY CYC

HIGH END STUDIO SPOT

HIGH END STUDIO COLOR

HIGH END STUDIO BEAM

HIGH END DATAFLASH

L&E PAR 16

TOPHAT

SR

R27

R83

R20

SKY CYC COLOR DETAIL

PLATE
1 OF 2